

SUNSHINE

Industrial Sewing Machine

PARTS LIST

DB-78700

DB-78701P	DB-78712P
78702P	78712PL
78702PMD	78712PS
78704P	78712PQ
78704PMD	78712PMD
78704PMP	78713P
78704PSF	78713PL
78706P	78713P-(NR)
78706PL	78717P
78706PMD	78717PMD
78708P	78723P
78708PMD	78723P (FH)
78710P	78725P (FH)
78710PMD	

正熙工業股份有限公司

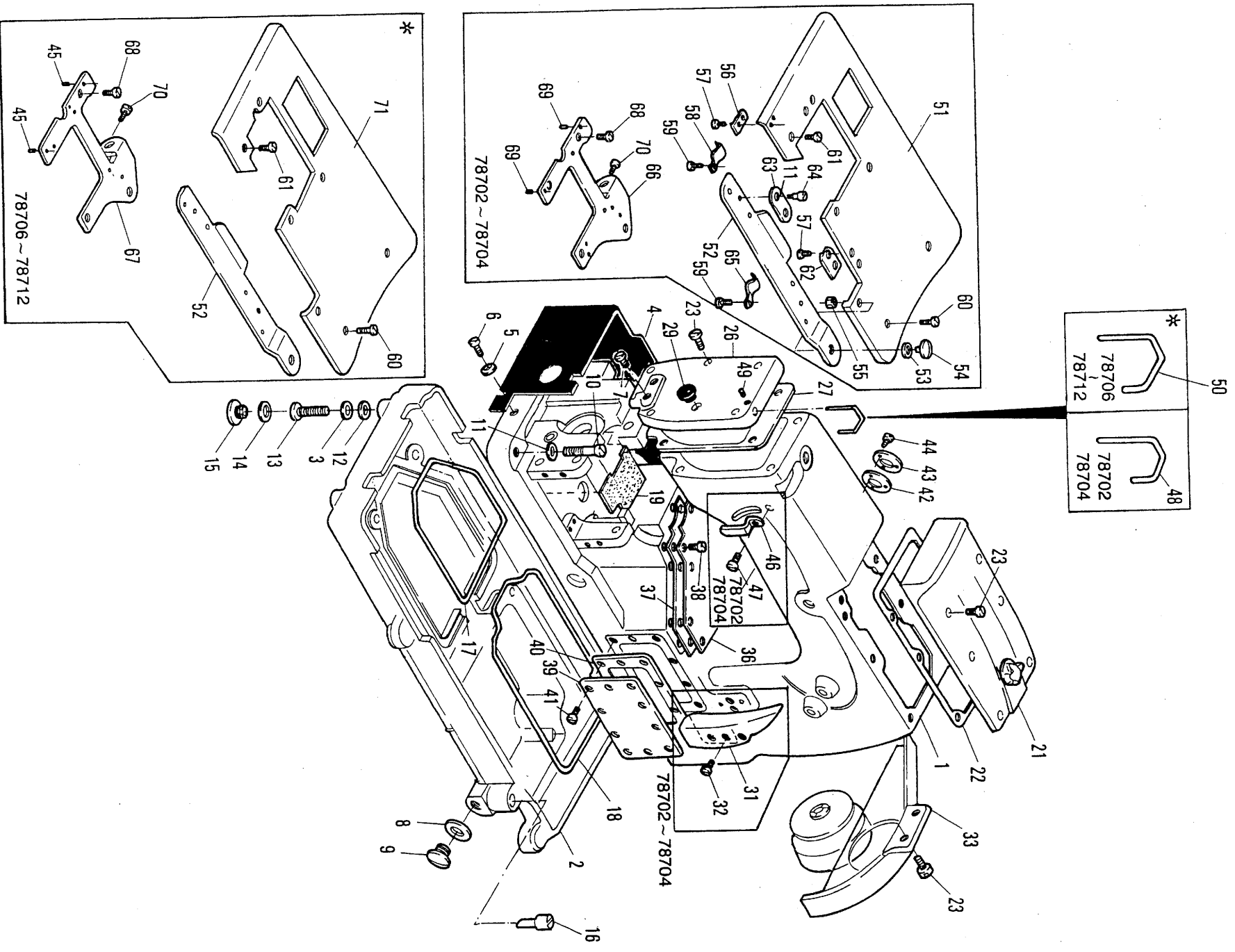
JEN CEA INDUSTRIAL CO., LTD.

2010.05

Contents

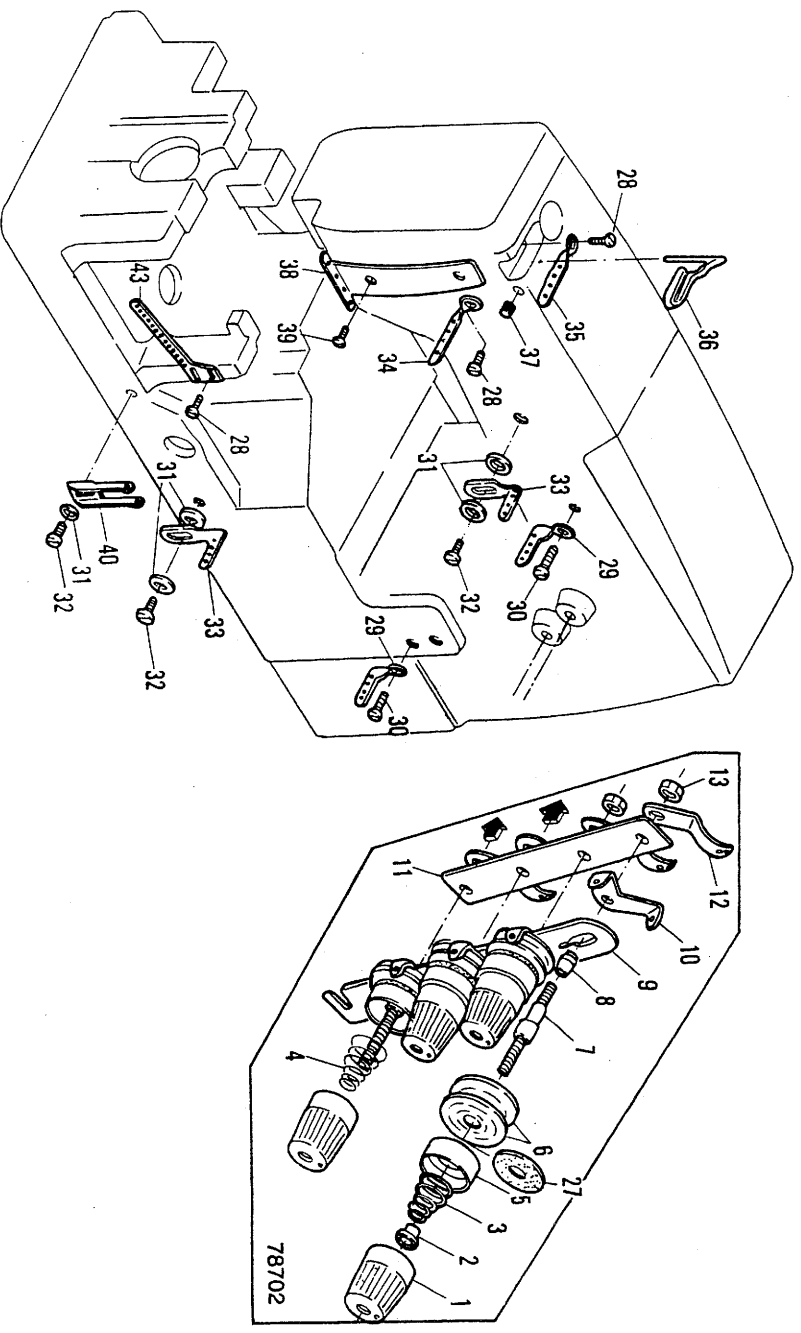
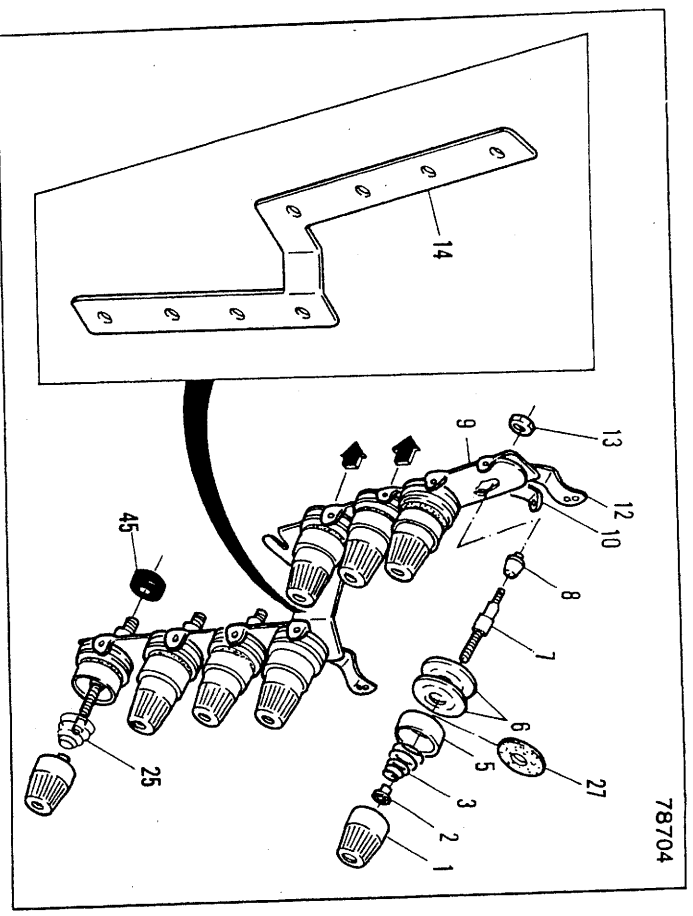
1. Housing components.....	1
2. Thread eyelet components (1).....	3
3. Thread eyelet components (2).....	5
4. Bushings	7
5. Oil lubrication apparatus.....	8
6. Needle lever crank.....	9
7. Feed rocker.....	11
8. Looper	13
9. Foot lifter mechanism.....	14
10. Puller.....	15
11. Gauge parts (78702P, 78704P).....	17
12. Order gauge parts	19
13. Front puller mechanism	21
14. Thread stands	23
15. Tape stands, Tape guide	25
16. Accessories	26
17. Table stand installation diagram	27

1. Housing components



Ref. No.	Part No.	Part Name	Qty	Ref. No.	Part No.	Part Name	Qty
1	B80101-S	Arm bed (02 - 04 P.PL)	1	36	B60136	Oil reservoir top cover	1
	B80101-L	Arm bed (06 - 12 P.PL)	1	37	B60137	Upper oil cover gasket	1
2	B60102A	Oil reservoir	1	38	B60138	Screw	7
3	B60103	Oil reservoir washer	4	39	B60139	Front oil cover	1
4	B60104	Side plate cover	1	40	B60140	Front oil cover gasket	1
5	B60105	Washer	3	41	B60141	Screw	10
6	B60106	Screw	3	42	B60142	Oil seal plate gasket	1
7	B60107	Screw	2	43	B60143	Oil seal plate	1
8	B60108	Gasket	1	44	B60510	Screw	3
9	B60109	Screw	1	45	B60145	Needle plate support for knock pin	2
10	B60110	Screw	2	46	B60146	Needle lever eyelet safety plate	1
11	B60111	Oil reservoir washer	2	47	B80132	Screw	1
12	B60112	Seal gasket	4	48	B60148	Needle bar eyelet safety bar	1
13	B60113	Screw	4	49	B80150	Needle bar eyelet safety bar	1
14	B60114	Gasket	4	50	B80151	Upper cloth plate	1
15	B60115	Screw	4	51	B80152	Front plate cover	1
16	B60116	Oil gauge	1	52	B60979	Spring washer	2
17	B60117	Oil reservoir	1	53	B80154	Screw	1
18	B60118	Oil reservoir	1	54	B60918	Nut	1
19	B80119	Oil filter	1	55	B80156	Spring supporter	1
20				56	B80157	Screw	4
21	B60121	Crank chamber oil cover	1	57	B80158	Plate spring	1
22	B60122	Crank chamber oil cover gasket	1	58	B80159	Screw	2
23	B60123	Screw	6	59	B60157	Screw	3
24				60	B60158	Screw	3
25				61	B80162	Spring supporter	1
26	B60126	Head cover	1	62	B80163	Folder mounting bracket	1
27	B60127	Head cover gasket	1	63	B60509	Screw	2
28				64	B80165	Plate spring	1
29	B60129	Head cover oil seal cap	1	65	B80166	Needle plate support (02 - 04 P.PL)	1
30				66	B80167	Needle plate support (06 - 12 P.PL)	1
31	B60131	Tension disc cover	1	67	B60160	Screw	3
32	B60132	Screw	2	68	B60161	Needle plate support for knock pin	2
33	B60133	Pulley cover	1	69	B60162	Screw	2
34				70			
35				71	B80171	Upper cloth plate	1

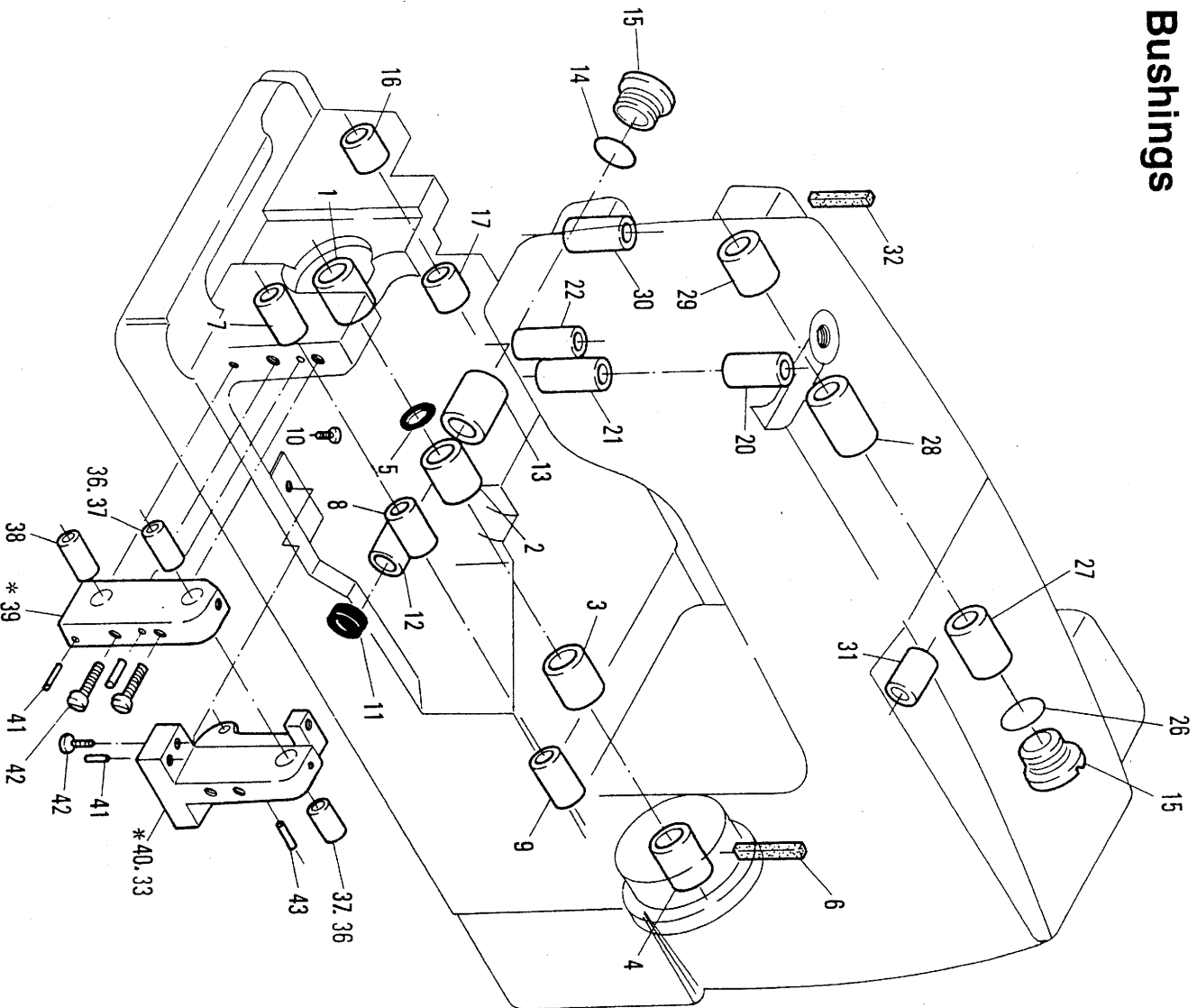
2. (78702 ~ 70704) Thread eyelet components (1)



Ref. No.	Part No.	Part Name	Q'ty	Ref. No.	Part No.	Part Name	Q'ty
1	B60201	Tension regulating nut	4	23			
2	B60202	Tension disc ratchet	4	24			
3	B60204	Needle thread tension spring.	2	25			
4	B80204	Looper thread tension spring	2	26			
5	B60205	Tension disc cover.	4	*27	B60214	Felt.	
6	B60206	Tension disc cover.	8	28	B60132	Screw.	2
7	B60207	Tension post.	4	29	B80229	Looper thread eyelet 4.	2
8	B60208	Tension post collar.	4	30	B60231	Screw.	2
9	B60209	Tension post support.	1	31	B60105	Washer	4
10	B60210	Tension post thread eyelet.	4	32	B60123	Screw.	2
11	B60211	Tension post holder.	1	33	B80233	Needle thread eyelet 4.	2
12	B60212	Lead in thread eyelet.	4	34	B80234	Needle lever thread eyelet 4.	1
13	B60213	Nut	2	35	B80235	Needle bar thread eyelet 4.	1
14	B80214	Tension post holder large	1	36	B80236	Needle thread take-up wire	1
15				37	B60225	Screw.	1
16				38	B80238	Needle thread guide 4.	1
17				39	B60229	Screw.	2
18				40	B80240	Looper thread guide eyelet	1
19				41			
20				42			
21				43	B80243	Looper thread guide eyelet 13.	1
22				44			
				45	B80245	Gasket	1

Ref. No.	Part No.	Part Name	Q'ty	Ref. No.	Part No.	Part Name	Q'ty
1	B80301	Bracket large.	1	53	B60213	Nut.	12
2	B80302	Plate large.	1	54	B60214	Felt.	12
3	B80303	Plate large.	2	55	B80204	Looper thread tension spring	6
4	B80304	Bracket bar.	2	56	B60205	Tension disc cover	12
5	B80305	Gl. de plate.	1	57			
6	B60965	Screw.	2	58	B80358	Bracket small.	1
7	B80307	Supporting bracket.	1	59	B80359	Plate small.	1
8	B60160	Screw.	1	60	B80360	Plate small.	1
9				61	B80361	Tension needle thread.	1
10	B80310	Tension needle thread.	1	62			
11	B60123	Screw.	1	63			
12	B80312	Needle thread guide bar.	1	64	B80364	Needle thread guide pin (L).	6
13	B60105	Washer.	2	65			
14				66			
15	B60111	Washer.	3	67			
16	B80316	Screw.	4	68			
17				69			
18				70			
19				71			
20				72			
21	B80328	Needle thread eyelet 12.	1	73			
22	B80326	Needle thread eyelet 8.	1	74	B80204	Looper thread tension spring.	8
23	B60132	Screw.	1	75			
24	B60225	Screw.	4	76	B60141	Screw.	4
25	B80325	Thread eyelet 6.	4	77			
26	B80326	Thread eyelet 8.	4	78			
27	B80327	Thread eyelet 10.	4	79			
28	B80328	Thread eyelet 12.	4	80			
29	B80329	Needle lever thread eyelet 6.	1	81			
30	B80330	Needle lever thread eyelet 8.	1	82			
31	B80331	Needle lever thread eyelet 10.	1	83			
32	B80332	Needle lever thread eyelet 12.	1	84			
33	B80333	Needle bar thread eyelet 6.	1	85			
34	B80334	Needle bar thread eyelet 8.	1	86			
35	B80335	Needle bar thread eyelet 10.	1	87			
36	B80336	Needle bar thread eyelet 12.	1	88			
37				89			
38				90			
39	B80339	Needle thread take-up wire.	1	91			
40	B80340	Looper thread guide eyelet.	1	92			
41				93			
42				94			
43	B80343	Needle thread guide 13.	1	95			
44	B60229	Screw.	2	96			
45	B80243	Looper thread guide eyelet 13.	1	97			
46	B60201	Tension regulating nut.	12	98			
47	B60202	Tension disc ratchet.	12	99			
48	B60203	Needle thread tension spring.	6	100			
49	B60206	Tension disc.	24	101			
50	B60207	Tension post.	12	102			
51	B60208	Collar.	12				
52	B60210	Needle thread eyelet.	12				

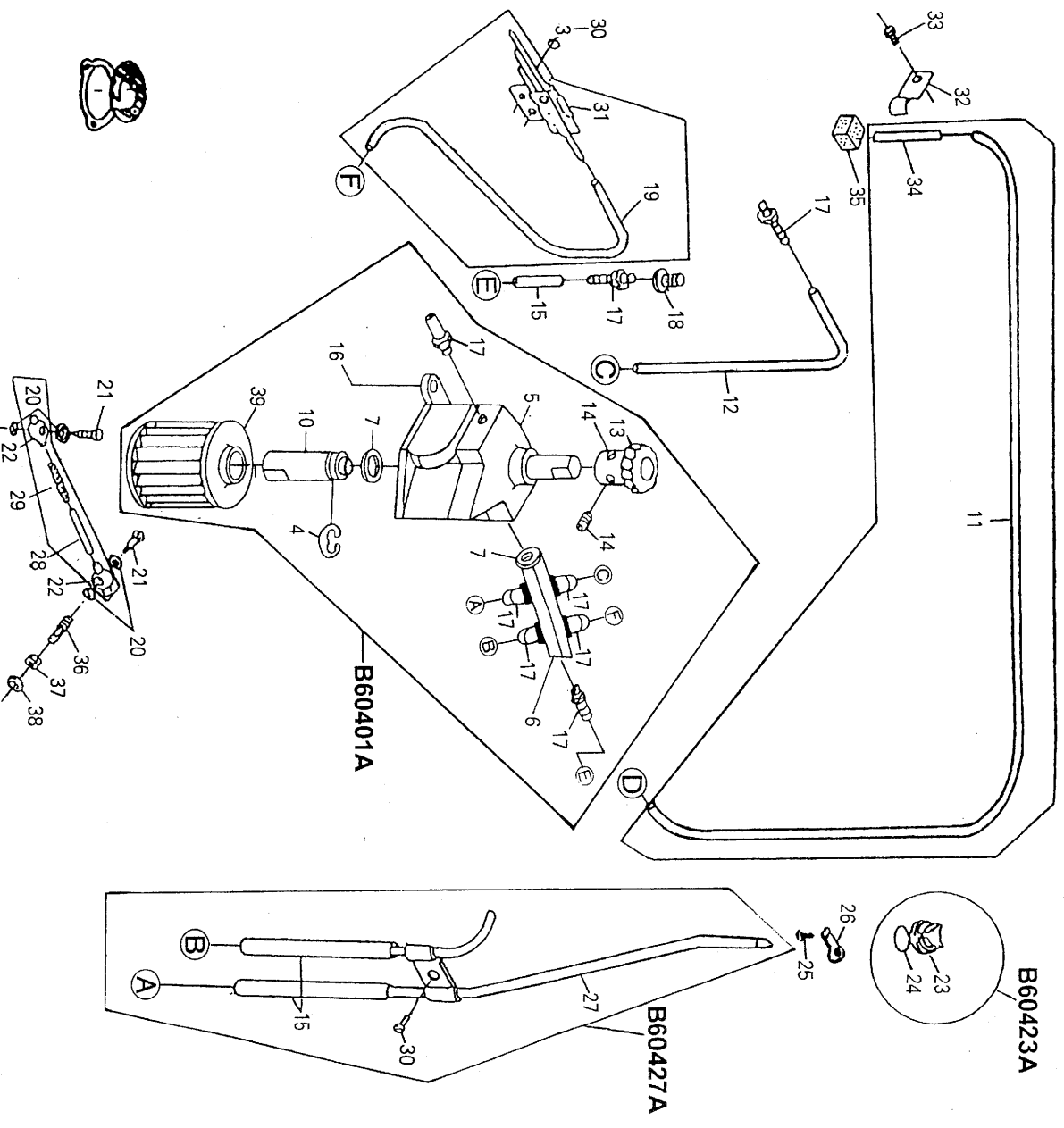
4. Bushings



Ref. No.	Part No.	Part Name	Q'ty	Ref. No.	Part No.	Part Name	Q'ty
1	B60301	Main shaft bushing	1	23	B60326	Gasket	1
2	B60302	Main shaft bushing	1	24	B60327	Puller drive lever bushing.	1
3	B60303	Main shaft bushing	1	25	B60328	Puller drive lever bushing.	1
4	B60304	Flange bushing	1	26	B60329	Puller drive lever bushing.	1
5	W80535	O-ring	1	27	B60330	Puller shaft bushing.	1
6	B60436	Felt	1	28	B60331	Presser foot lifter lever bushing.	1
7	B60307	Looper rocker shaft bushing.	1	29	B60435	Felt	1
8	B60308	Looper rocker shaft bushing.	1	30	B80433	Thread guide (right) (6P~12P)	1
9	B80409	Looper rocker shaft bushing.	1	31			
10	B80410	Screw	1	32			
11	B60311	Oil plug	1	33			
12	B60312	Looper drive lever shaft bushing	1	34	B80436	Bushing (6P~12P)	2
13	B60313	Looper drive lever shaft bushing	1	35	B80437	Bushing (4P)	2
14	B60314	Gasket	1	36	B80438	Bushing	1
15	B60315	Smooth	2	*37	B80439	Thread guide (left)	1
16	B60316	Feed rocker shaft bushing	1	*38	B80440	Thread guide (right) (4P)	1
17	B60317	Feed rocker shaft bushing	1	*39	B80441	Pin	4
18				40	B80442	Screw	4
19				41	B80443	Pin	1
20	B60320	Needle bar bushing (upper)	1	42			
21	B60321	Needle bar bushing (lower)	1	43			
22	B60322	Presser bar bushing	1				

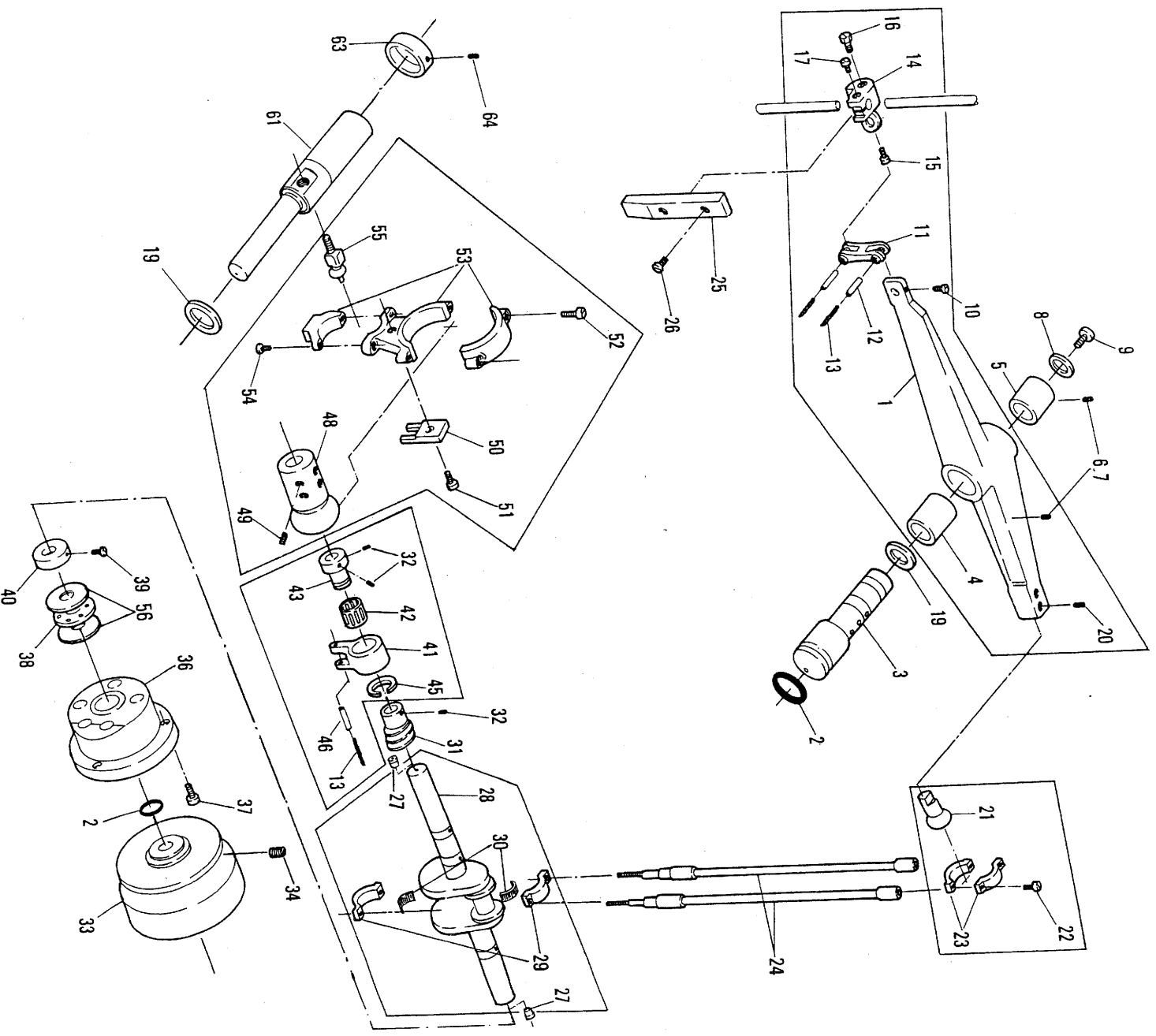
NOTE: Parts marked with * are supplied with arm bed as an assembly, and cannot be individually ordered.

5. New oil lubrication apparatus



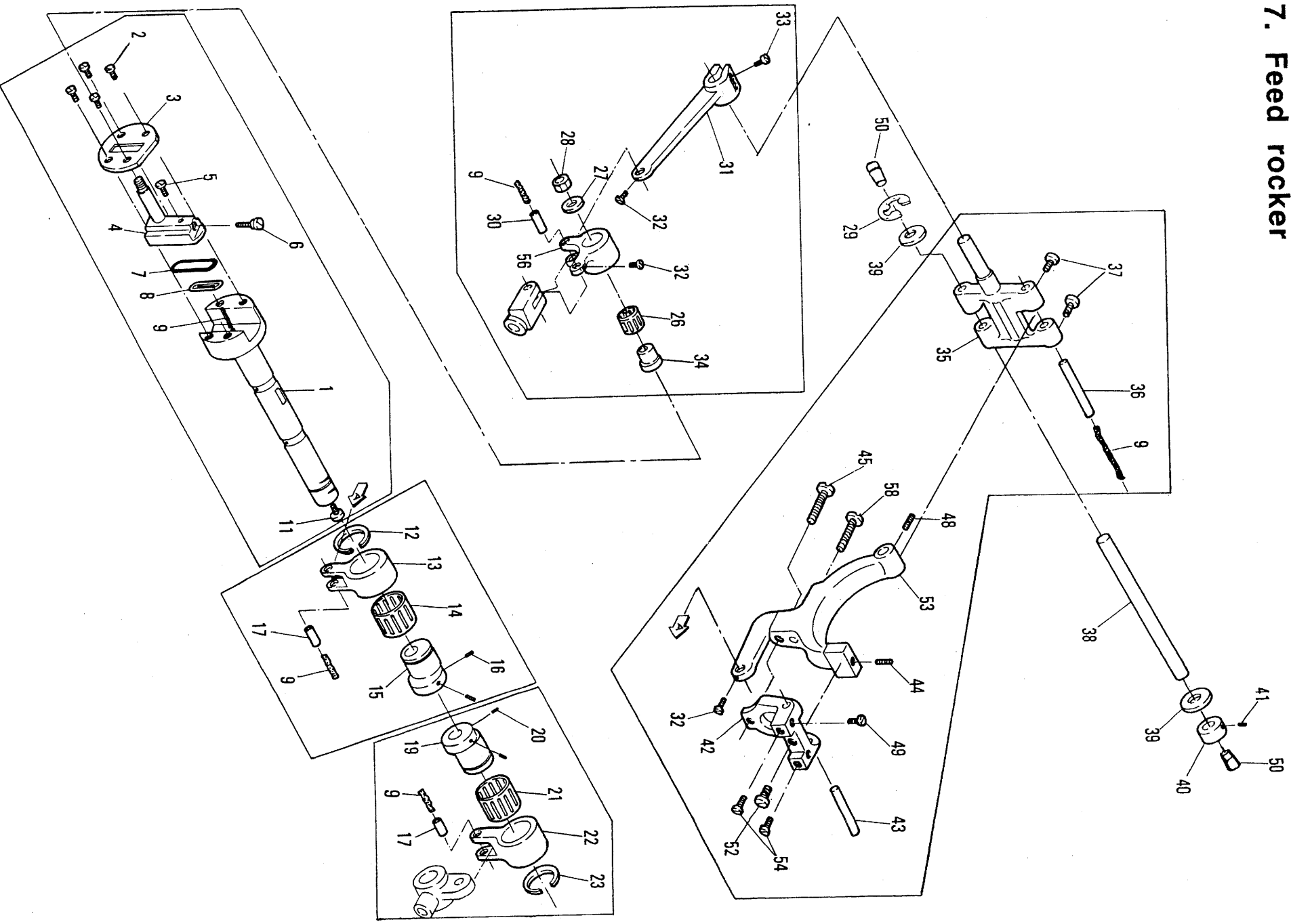
Ref. No.	Part No.	Part Name	Q'ty	Ref. No.	Part No.	Part Name	Q'ty
4	B60401A	Oil pump body.....	1	22	B60422	Tube coupling.....	2
5		E-ring (B693-2230).....	1	23	B60423	Oil pot lid.....	1
6		Pump set (B630-0150).....	1	24	B60424	O-ring.....	1
7		Oil separator (B631-2490).....	1	25	B60239	Screw.....	1
		Washer (B675-4700).....	2	26	B60426	Pipe support.....	1
				27	B60427	Pipe.....	1
10		Filter tube (B635-1070).....	1	28	B60428	Vinyl pipe.....	1
11	B60411	Vinyl pipe.....	1	29	B60446	Felt.....	1
12	B60412	Vinyl pipe.....	1	30	B60231	Screw.....	3
13	B60413	Gear (B631-4090).....	1	31	B60431	Pipe.....	1
14	B60419	Screw (B684-5210).....	2	32	B60432	Support.....	1
15	B60415	Vinyl pipe.....	1	33	B60433	Screw.....	1
16	B60123	Screw.....	3	34	B60434	Pipe.....	1
17	B60409	Pipe joint.....	8	35	B60435	Felt.....	1
18	B60418	Fixing screw.....	1	36	B60436	Oil flow screw.....	1
19	B60419	Vinyl pipe.....	1	37	B60437	Nut.....	1
20	B60420	Packing.....	4	38	B60438	Packing.....	1
21	B60421	Oil guide screw.....	2	39	W901754	Oil filter.....	1

6. Needle lever crank



Ref. No.	Part No.	Part Name	Qty
1	B60501	Needle lever	1
2	B60305	O-ring	1
3	B60503	Needle lever stud	1
4	B60504	Needle lever bushing	1
5	B60505	Needle lever stud bushing	1
6	B60506	Screw	2
7	B60507	Screw	2
8	B60420	Gasket	1
9	B60509	Screw	1
10	B60532	Screw	1
11	B60511	Needle bar connecting link	1
12	B60512	Needle bar connection link pin	2
13	B60446	Felt	2
14	B60514	Needle bar connection	1
15	B60515	Screw	1
16	B60516	Screw	1
17	B60231	Screw	1
18			
19	B60519	Washer	1
20	B60520	Screw	2
21	B60521	Needle lever connecting rod	1
22	B60522	Screw	2
23	B60523	Ball joint for connecting rod	1
24	B60524	Connecting bar	2
25	B60525	Needle bar guide plate	1
26	B60107	Screw	2
27	B60527	Pin	2
28	B60528	Crank shaft	1
29	B60529	Ball joint for crankshaft	1
30	B60530	Needle roller for crankshaft	28
31	B60531	Worm gear	1
32	B60532	Screw	2
33	B60533	Pulley	1
34	B60534	Screw	2
35			
36	B60536	Flange	1
37	B60123	Screw	3
38	B60538	Bearing	1
39	B60539	Screw	2
40	B60540	Crankshaft collar	1
41	B80722	Eccentric link	1
42	B80721	Bearing	1
43	B80719	Looper avoid eccentric	1
44			
45	B80723	Snap ring	1
46	B60617	Eccentric link pin	1
47			
48	B80648	Eccentric retainer holder	1
49	B60549	Screw	6
50	B60550	Eccentric guide fork	1
51	B60551	Screw	1
52	B60552	Screw	2
53	B60553	Looper driving lever ball joint	1
54	B60554	Screw	2
55	B60555	Looper driving connecting rod	1
56	B60541	Washer	1
57			
58			
59			
60			
61	B60561	Looper driving shaft	1
62	B60563	Collar	1
63	B60564	Screw	2
64			

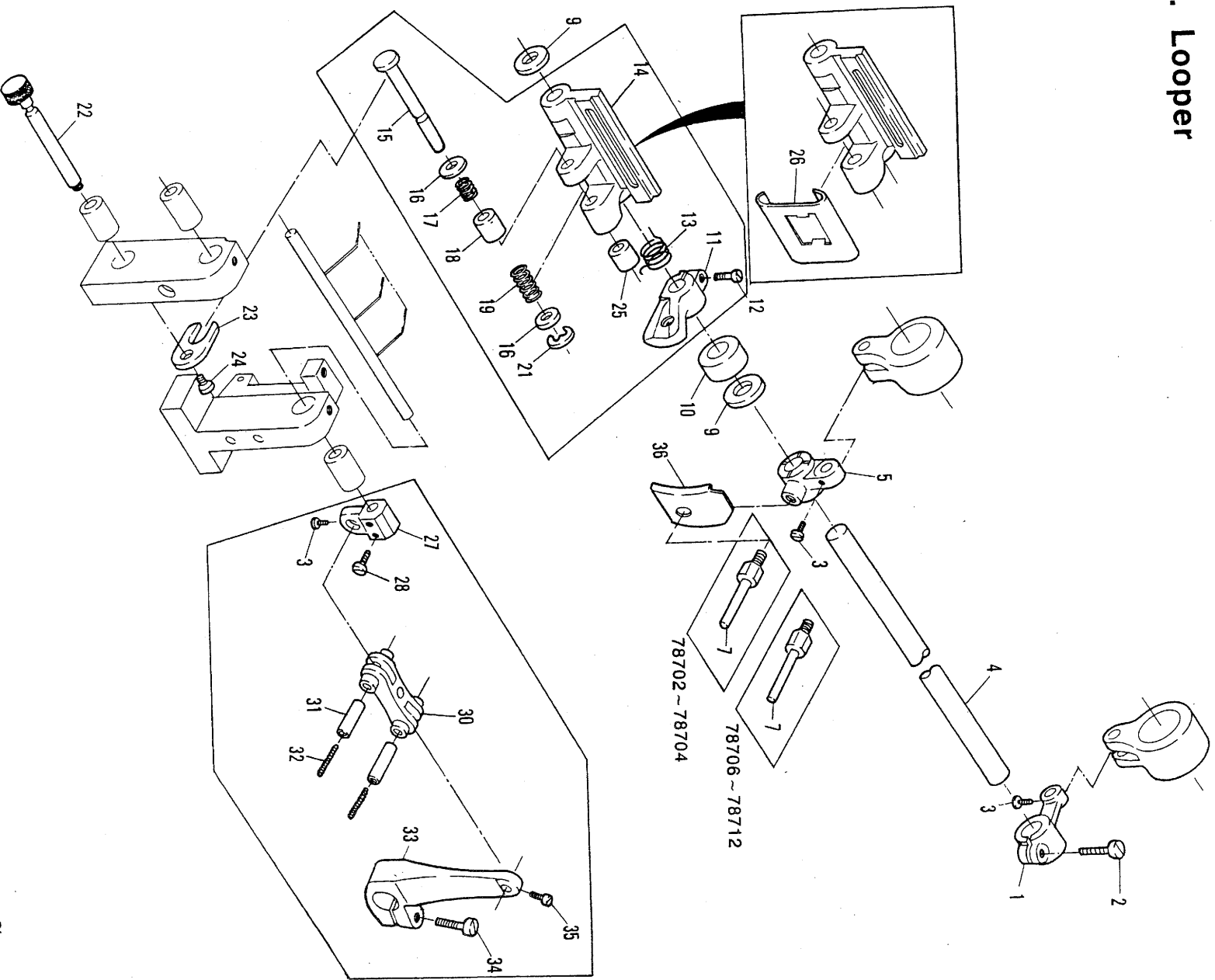
7. Feed rocker



Ref. No.	Part No.	Part Name	Q'ty
1	B80701	Main shaft	1
2	B60138	Screw	4
3	B60603	Head plate	1
4	B60604	Feed crank adjusting post	1
5	B60605	Screw	1
6	B60606	Screw	1
7	B60607	O-ring	1
8	B60608	Oil guide	1
9	B60446	Felt	1
10			
11	B60611	Screw	1
12	B60612	Snap ring	1
13	B60613	Feed eccentric link	1
14	B60614	Bearing	1
15	B60615	Feed eccentric 0.8	1
16	B60564	Screw	2
17	B60617	Connecting link pin	1
18			
19	B80719	Retainer eccentric	1
20	B60564	Screw	2
21	B80721	Bearing	1
22	B80722	Retainer eccentric link	1
23	B80723	Snap ring	1
24			
25			
26	B60626	Bearing	1
27	B60627	Washer	1
28	B60628	Nut	1
29	B60619	C-Ring	1

Ref. No.	Part No.	Part Name	Q'ty
30	B60512	Feed rocker link pin	1
31	B60631	Feed rocker arm	1
32	B60632	Screw	1
33	B60633	Screw	2
34	B60634	Feed crank link collar	1
35	B60635	Single feed rocker	1
36	B60636	Feed dog holder shaft	1
37	B60106	Screw	2
38	B60638	Feed rocker shaft small	1
39	B60639	Washer	2
40	B60640	Collar	2
41	B60160	Screw	2
42	B80742	Feed dog holder	1
43	B80743	Feed dog holder shaft	1
44	B80744	Screw	1
45	B80745	Screw	1
46			
47			
48	B60532	Screw	1
49	B80749	Screw	2
50	B60650	Pin	1
51			
52	B80752	Screw	1
53	B80753	Feed rocker	1
54	B80754	Screw	2
55			
56	B60656	Feed rocker link	1
57			
58	B80758	Screw	1

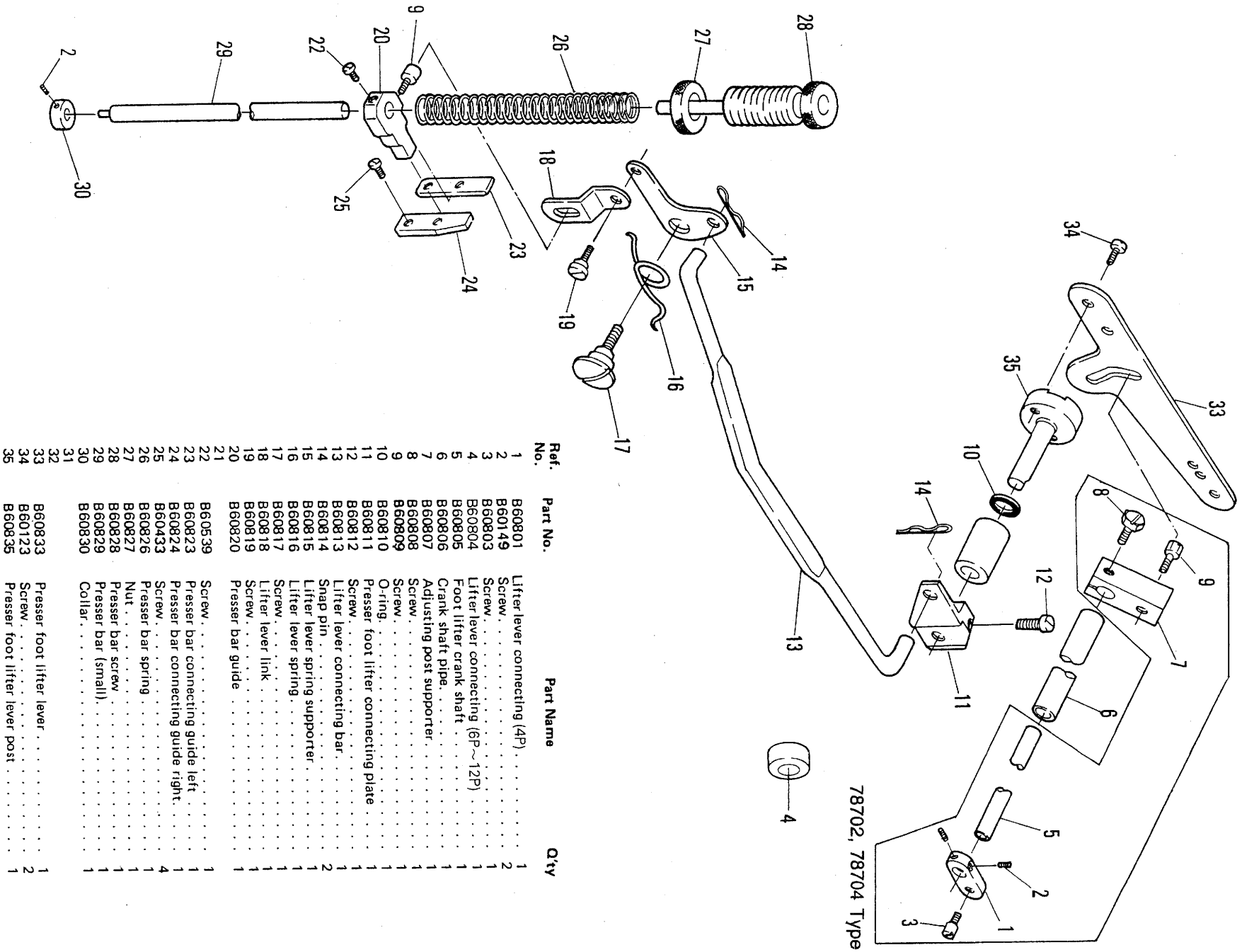
8. Looper



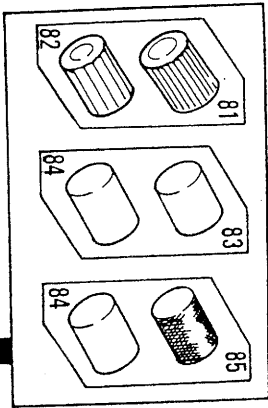
Ref. No.	Part No.	Part Name	Qty
1	B80801	Looper avoid lever	1
2	B62027	Screw	1
3	B60632	Looper rocker set shaft	1
4	B80604	Looper rocker	1
5	B80805	Retainer lever	1
6	B80807	Retainer bar small	1
7	B60639	Washer	2
8	B80810	Collar	1
9	B80811	Looper rocker stopper	1
10	B60633	Screw	1
11	B80813	Looper holder spring	1
12	B80814	Looper rocker	1
13	B80815	Looper rocker set shaft	1
14	B60645	Tapered pin set washer	1
15	B80817	Spring for stopper	1
16	B80818	Bushing	1

Ref. No.	Part No.	Part Name	Qty
19	B80819	Spring for stopper	1
20	B80821	Snap ring	1
21	B80822	Looper throw-out actuating shaft	1
22	B80823	Looper throw-out actuating plate	1
23	B80824	Screw	1
24	B80825	Bushing	1
25	B80826	Cover	1
26	B80827	Retainer bar holder	2
27	B60539	Screw	2
28	B80830	Retainer connecting link	1
29	B80831	Retainer link pin	1
30	B60446	Felt	2
31	B80833	Retainer lever	1
32	B60719	Screw	1
33	B80836	Oil guide	1

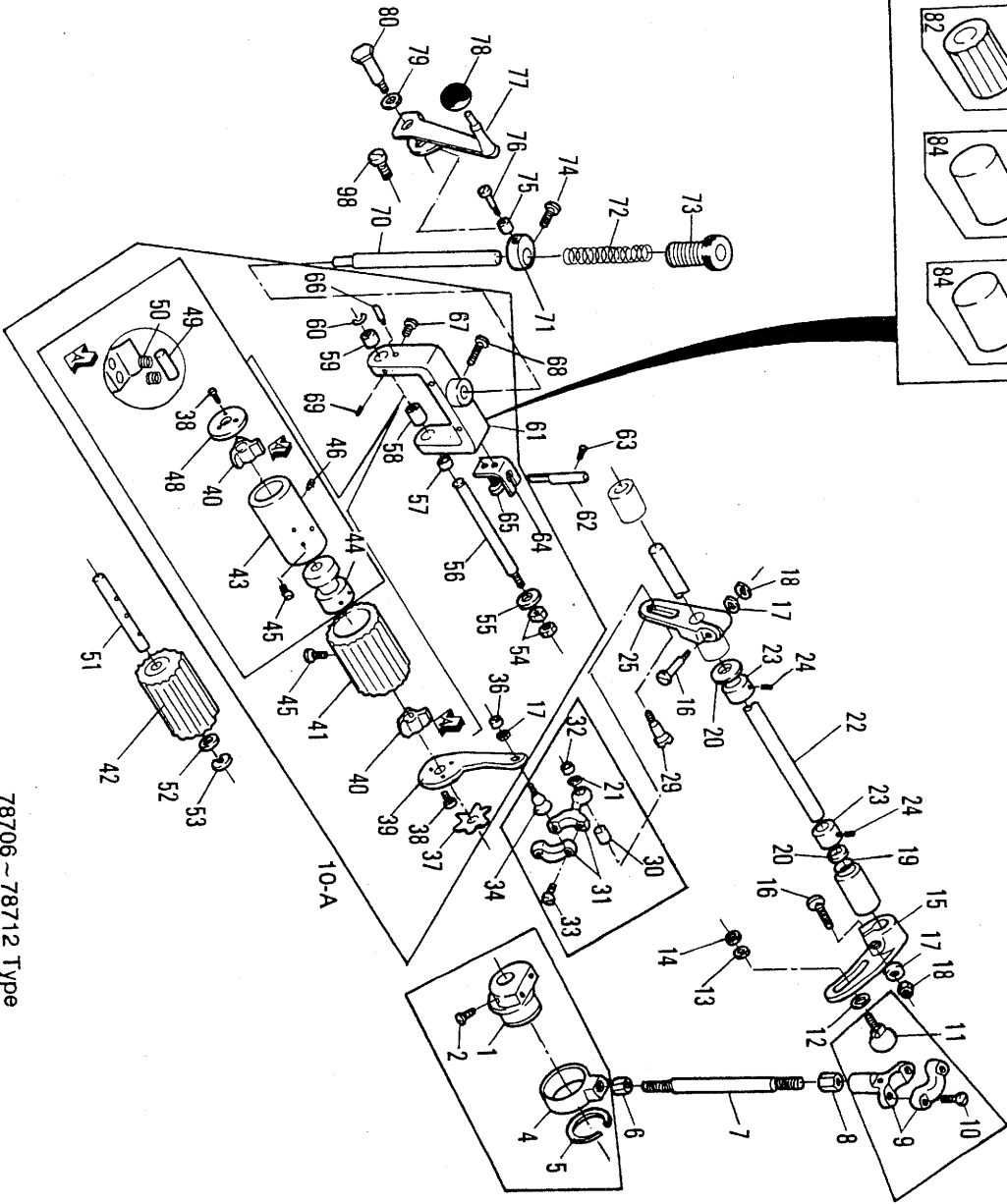
9. Foot lifter components



10. Puller

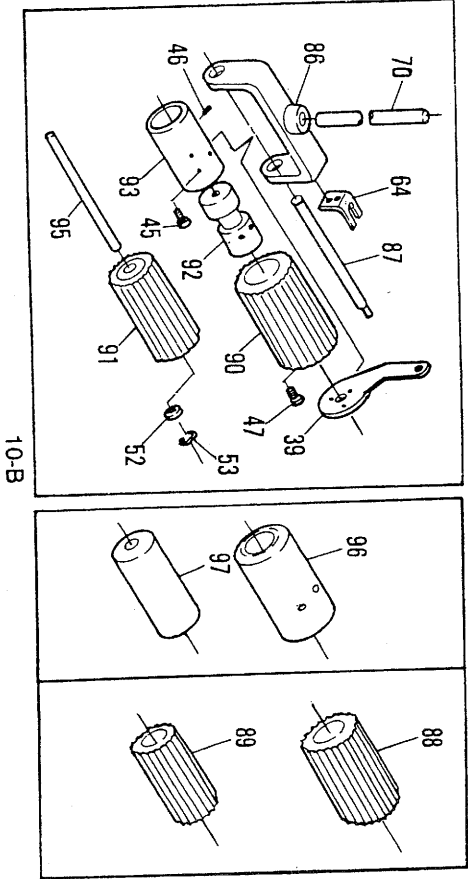


Note: Assembly Reference No. 10-A in the illustration has different assembly numbers depending on the gear teeth.
Gears are combined as follows:
Ref. No. 41 gear with Ref. No. 42 gear
Ref. No. 81 gear with Ref. No. 82 gear
Ref. No. 83 smooth roller and Ref. No. 85 rouletted roller with Ref. No. 84 smooth roller



78706 ~ 78712 Type

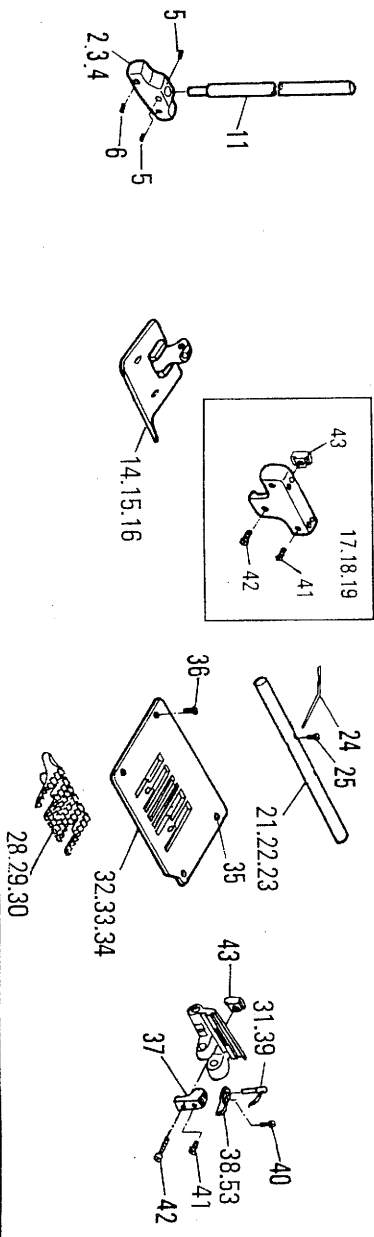
Note: Assembly Reference No. 10-B in the illustration has different assembly numbers depending on Ref. No. 90 gear and Ref. No. 96 smooth roller & Ref. No. 88 gear
Components shown in 10-B are interchangeable with those shown in 10-A.



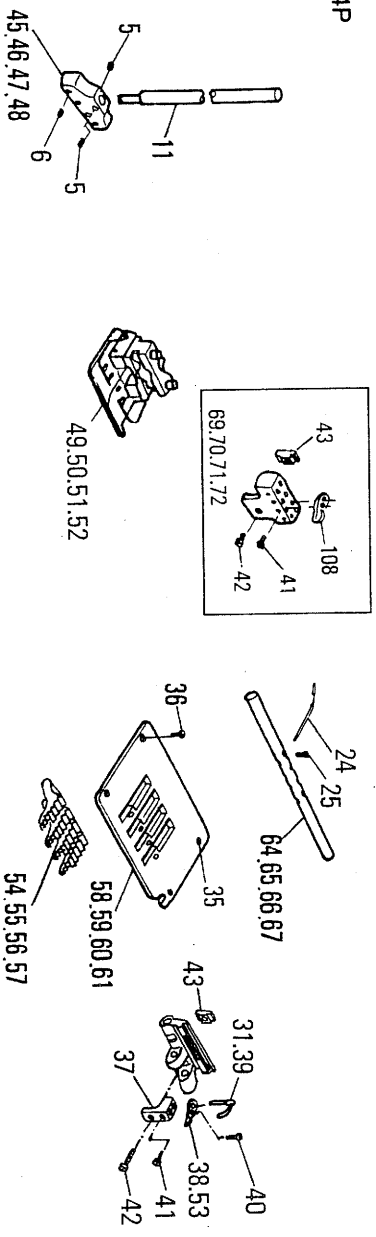
Ref. No.	Part No.	Part Name	Q'ty	Ref. No.	Part No.	Part Name	Q'ty
1	B60901	Puller driving eccentric.	1	50	B60950	Check clutch spring.	12
2	B60902	Screw.	2	51	B60951	Rear puller shaft	1
3				52	B60639	Washer	1
4	B60904	Connecting link	1	53	B60953	Spring washer	1
5	B60905	25ø snap ring	1	54	B60954	Nut	2
6	B60906	Nut	1	55	B60955	Washer	1
7	B60907	Puller driving connection.	1	56	B60983	Rear puller shaft	1
8	B60908	Nut Left	1	57	B60957	Puller holder shaft bushing S	1
9	B60909	Puller driving connection rod	1	58	B60958	Puller holder shaft bushing M	1
10	B60910	Screw.	2	59	B60959	Puller holder shaft bushing L	1
11	B60911	Connecting ball joint.	1	60	B60960	ø8 snap ring	1
12	B60912	Washer	1	61	B60981	Rear puller holder.	1
13	B60913	Washer	1	62	B60962	Puller liner.	1
14	B60914	Nut	1	63	B60225	Screw.	1
15	B60915	Puller driving lever, rear	1	64	B60964	Rear puller stopper	1
16	B60916	Screw.	1	65	B60965	Screw.	2
17	B60645	Washer	1	66	B60966	Screw.	1
18	B60918	Nut	1	67	B60551	Screw.	1
19	B60305	O-ring.	1	68	B60968	Screw.	1
20	B60519	Washer	2	69	B60969	Screw.	1
21	B60217	Washer	1	70	B60970	Feed roller shaft	1
22	B60922	Puller driving shaft	1	71	B60971	Feed roller shaft holder	1
23	B60923	Crank shaft collar	2	72	B60972	Puller spring	1
24	B60532	Screw.	4	73	B60973	Puller screw	1
25	B60925	Puller driving lever, front.	1	74	B60974	Screw.	1
26				75	B60975	Lifter lever roller	1
27				76	B60976	Screw.	1
28				**77	B60977	Lifter lever	1
29	B60929	Screw.	1	78	B60978	Lifter lever knob	1
30	B60930	Connecting link roller	1	79	B60979	Lifter spring	1
31	B60931	Puller connecting rod.	1	80	B60980	Screw.	1
32	B60932	Nut	1	81	B81081	Rear puller gear, 28 teeth (Nylon)	1
33	B60554	Screw.	2	82	B81082	Rear puller gear, 23 teeth (Nylon)	1
34	B60934	Connecting ball joint.	1	83	B60993	Rear puller (Smooth)	1
35				84	B60992	Rear puller (Smooth)	1
36	B60213	Nut.	1	85	B81085	Rear puller, rouletted roller (Steel) (S)	1
37	B60937	Puller plate spring.	1	86	B81086	Rear puller holder.	1
38	B60162	Screw.	6	87	B81087	Rear puller shaft	1
39	B60984	Rear puller connecting plate.	1	88	B81088	Rear puller gear, 28 teeth (Nylon)	1
40	B60940	Clutch	2	89	B81089	Rear puller gear, 23 teeth (Nylon)	1
41	B81041	Rear puller gear, 22 teeth (Nylon)	1	90	B81090	Rear puller gear, 22 teeth (Nylon)	1
42	B81042	Rear puller gear, 18 teeth (Nylon)	1	91	B81091	Rear puller gear, 18 teeth (Nylon)	1
43	B60988	Rear puller pipe.	1	92	B81092	Rear puller thrust collar	1
44	B60987	Rear puller thrust collar	1	93	B81093	Rear puller pipe.	1
45	B60229	Screw.	3	94	B60970	Feed roller shaft.	1
46	B60946	Screw.	1	95	B81095	Rear puller shaft	1
47				96	B81096	Rear puller (Smooth)	1
48	B60948	Rear puller pipe cover	1	97	B81097	Rear puller (Smooth)	1
49	B60949	Check clutch roller	6	98	B60998	Screw.	1
				99	B81099	Rear puller, rouletted roller (Steel) (L)	1

11. Gauge parts (78702P, 78704P)

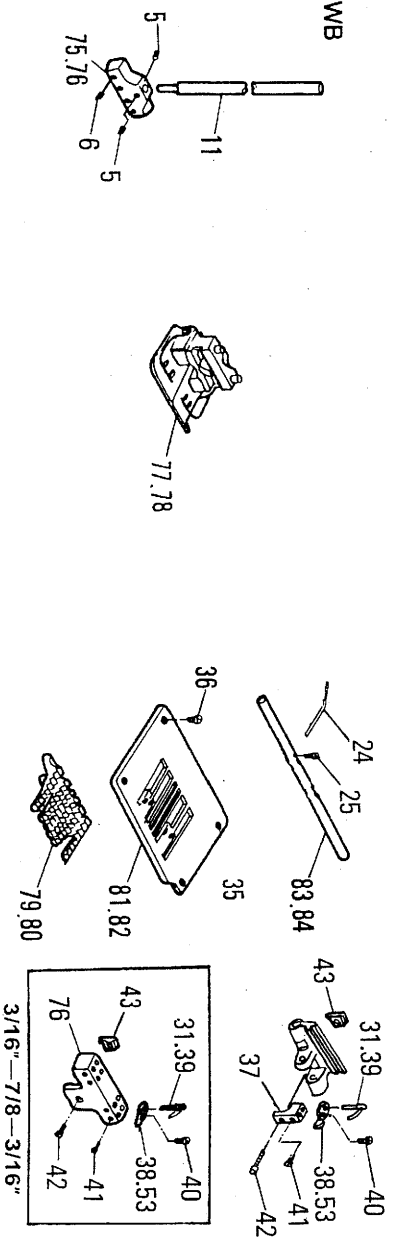
78702P



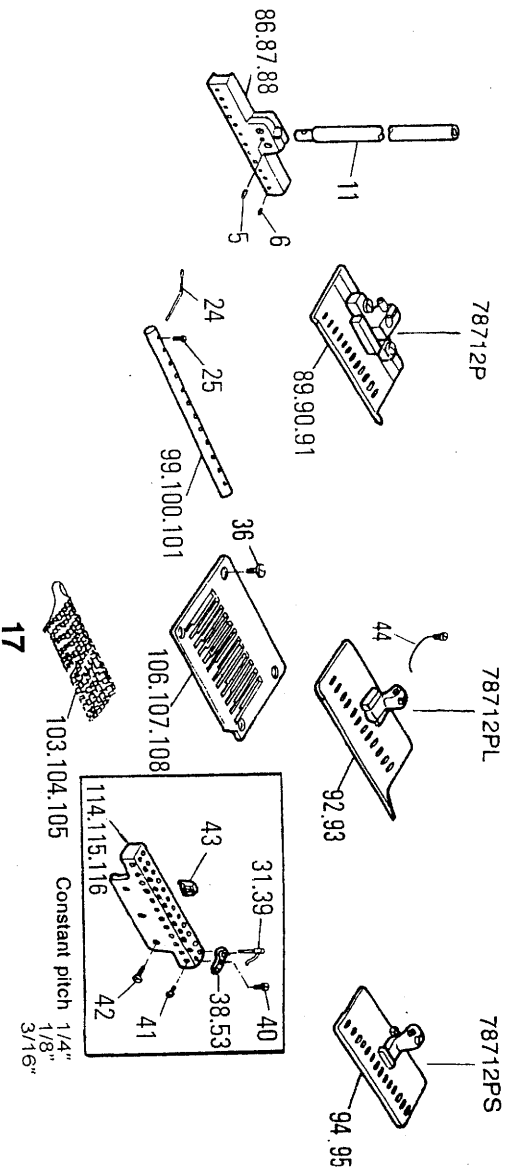
78704P



78704WB



78712P-PL-PS



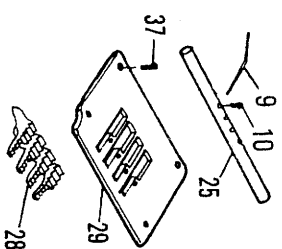
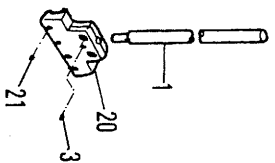
Ref. No.	Part No.	Part Name	Q'ty
1			
2	B02NH(1"-1/8")	Needle holder(1"-1/8").....	
3	B02NH(1/4")	Needle holder(1/4").....	
4	B02NH(5/32")	Needle holder(5/32").....	
5	B62208	Screw.....	
6	B61022	Screw.....	
7			
8			
9			
10			
11	B81111	Needle Bar.....	
12			
13			
14	B02PF(1"-1/8")	Presser Foot(1"-1/8").....	
15	B02PF(1/4")	Presser Foot(1/4").....	
16	B02PF(5/32")	Presser Foot(5/32").....	
17	B02LH(1"-1/8")	Looper Holder(1"-1/8").....	
18	B02LH(1/4")	Looper Holder(1/4").....	
19	B02LH(5/32")	Looper Holder(5/32").....	
20			
21	B02RH(1"-1/8")	Retainer Holder(1"-1/8").....	
22	B02RH(1/4")	Retainer Holder(1/4").....	
23	B02RH(5/32")	Retainer Holder(5/32").....	
24	B81124	Retainer Looper.....	
25	B60241	Screw.....	
26			
27			
28	B02FD(1"-1/8")	Feed Dog(1"-1/8").....	
29	B02FD(1/4")	Feed Dog(1/4").....	
30	B02FD(5/32")	Feed Dog(5/32").....	
31	19-431(S)	Looper(1/8").....	
32	B02NP(1"-1/8")	Needl Plate(1"-1/8").....	
33	B02NP(1/4")	Needl Plate(1/4").....	
34	B02NP(5/32")	Needl Plate(5/32").....	
35	B81135	Screw(特殊用).....	
36	B60229	Screw.....	
37	B01LH	Looper Holder.....	
38	B81138	Needl Guard.....	
39	19-431(L)	Looper(1/8"以上用).....	
40	B81140	Screw.....	
41	B81141	Screw.....	
42	B81142	Screw.....	
43	B81143	Screw.....	
44	B81144	Spring(観規).....	
45	B04NH(1")	Needle holder(1").....	
46	B04NH(1"-1/8")	Needle holder(1"-1/8").....	
47	B04NH(1"-1/4")	Needle holder(1"-1/4").....	
48	B04NH(1"-1/2")	Needle holder(1"-1/2").....	
49	B04PF-H(1"-1/2")	Presser Foot(1"-1/2").....	
50	B04PF-H(1")	Presser Foot(1").....	
51	B04PF-H(1"-1/8")	Presser Foot(1"-1/8").....	
52	B04PF-H(1"-1/4")	Presser Foot(1"-1/4").....	
53	B81153	Needl Guard(3/16").....	
54	B04FD(1")	Feed Dog(1").....	
55	B04FD(1"-1/8")	Feed Dog(1"-1/8").....	
56	B04FD(1"-1/4")	Feed Dog(1"-1/4").....	
57	B04FD(1"-1/2")	Feed Dog(1"-1/2").....	
58	B04NP(1")	Needl Plate(1").....	
59	B04NP(1"-1/8")	Needl Plate(1"-1/8").....	

Ref. No.	Part No.	Part Name	Q'ty
60	B04NP(1"-1/4")	Needl Plate(1"-1/4").....	
61	B04NP(1"-1/2")	Needl Plate(1"-1/2").....	
62			
63			
64	B04RH(1")	Retainer Holder(1").....	
65	B04RH(1"-1/8")	Retainer Holder(1"-1/8").....	
66	B04RH(1"-1/4")	Retainer Holder(1"-1/4").....	
67	B04RH(1"-1/2")	Retainer Holder(1"-1/2").....	
68			
69	B04LH(1")	Looper Holder(1").....	
70	B04LH(1"-1/8")	Looper Holder(1"-1/8").....	
71	B04LH(1"-1/4")	Looper Holder(1"-1/4").....	
72	B04LH(1"-1/2")	Looper Holder(1"-1/2").....	
73	B04LH-WB	Looper Holder(1/4"x1"x1/4").....	
74	B04LH-MP	Looper Holder(3/16"x7/8"x3/16").....	
75	B04NH-WB	Needle holder(1/4"x1"x1/4").....	
76	B04NH-MP	Needle holder(3/16"x7/8"x3/16").....	
77	B04PF-WB	Presser Foot(1/4"x1"x1/4").....	
78	B04PF-MP	Presser Foot(3/16"x7/8"x3/16").....	
79	B04FD-WB	Feed Dog(1/4"x1"x1/4").....	
80	B04FD-MP	Feed Dog(3/16"x7/8"x3/16").....	
81	B04NP-WB	Needl Plate(1/4"x1"x1/4").....	
82	B04NP-MP	Needl Plate(3/16"x7/8"x3/16").....	
83	B04RH-WB	Retainer Holder(1/4"x1"x1/4").....	
84	B04RH-MP	Retainer Holder(3/16"x7/8"x3/16").....	
85			
86	B12NH(1/8")	Needle holder(1/8").....	
87	B12NH(1/4")	Needle holder(1/4").....	
88	B12NH(3/16")	Needle holder(3/16").....	
89	B12PF(1/8")	Presser Foot(3/16").....	
90	B12PF(1/4")	Presser Foot(3/16").....	
91	B12PF(3/16")	Presser Foot(3/16").....	
92			
93			
94	B12PF-PS(1/4")	Presser Foot ps(1/4").....	
95	B12PF-PS(3/16")	Presser Foot ps(3/16").....	
96	B81196	Screw.....	
97			
98			
99	B12RH(1/8")	Retainer Holder(1/8").....	
100	B12RH(1/4")	Retainer Holder(1/4").....	
101	B12RH(3/16")	Retainer Holder(3/16").....	
102			
103	B12FD(1/8")	Feed Dog(1"/8").....	
104	B12FD(1/4")	Feed Dog(1"/4").....	
105	B12FD(3/16")	Feed Dog(3/16").....	
106	B12NP(1/8")	Needl Plate(1/8").....	
107	B12NP(1/4")	Needl Plate(1/4").....	
108	B12NP(3/16")	Needl Plate(3/16").....	
109			
110			
111			
112			
113			
114	B12LH(1/8")	Looper Holder(1/8").....	
115	B12LH(1/4")	Looper Holder(1/4").....	
116	B12LH(3/16")	Looper Holder(3/16").....	
117			
118			

12. Order gauge parts

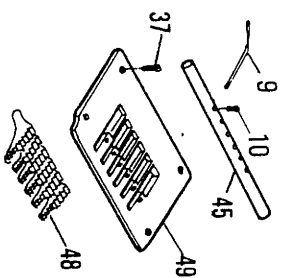
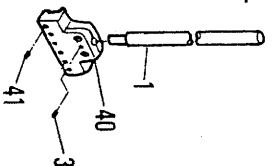
(1/4"; 7/16"; 1"; 1-1/4"; 1-1/2")

78704-PL



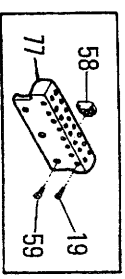
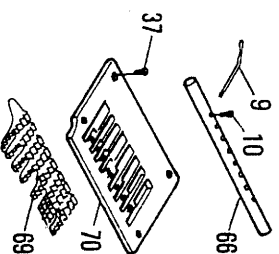
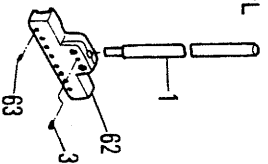
(3/16"; 1/4"; 1/3"; 3/8")

78706P-PL



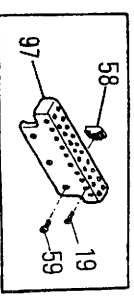
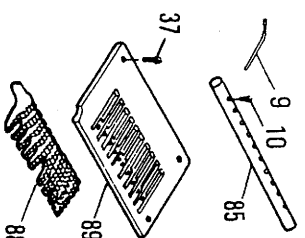
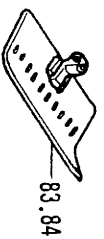
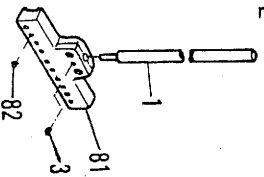
(1/4"; 3/16")

78708P-PL



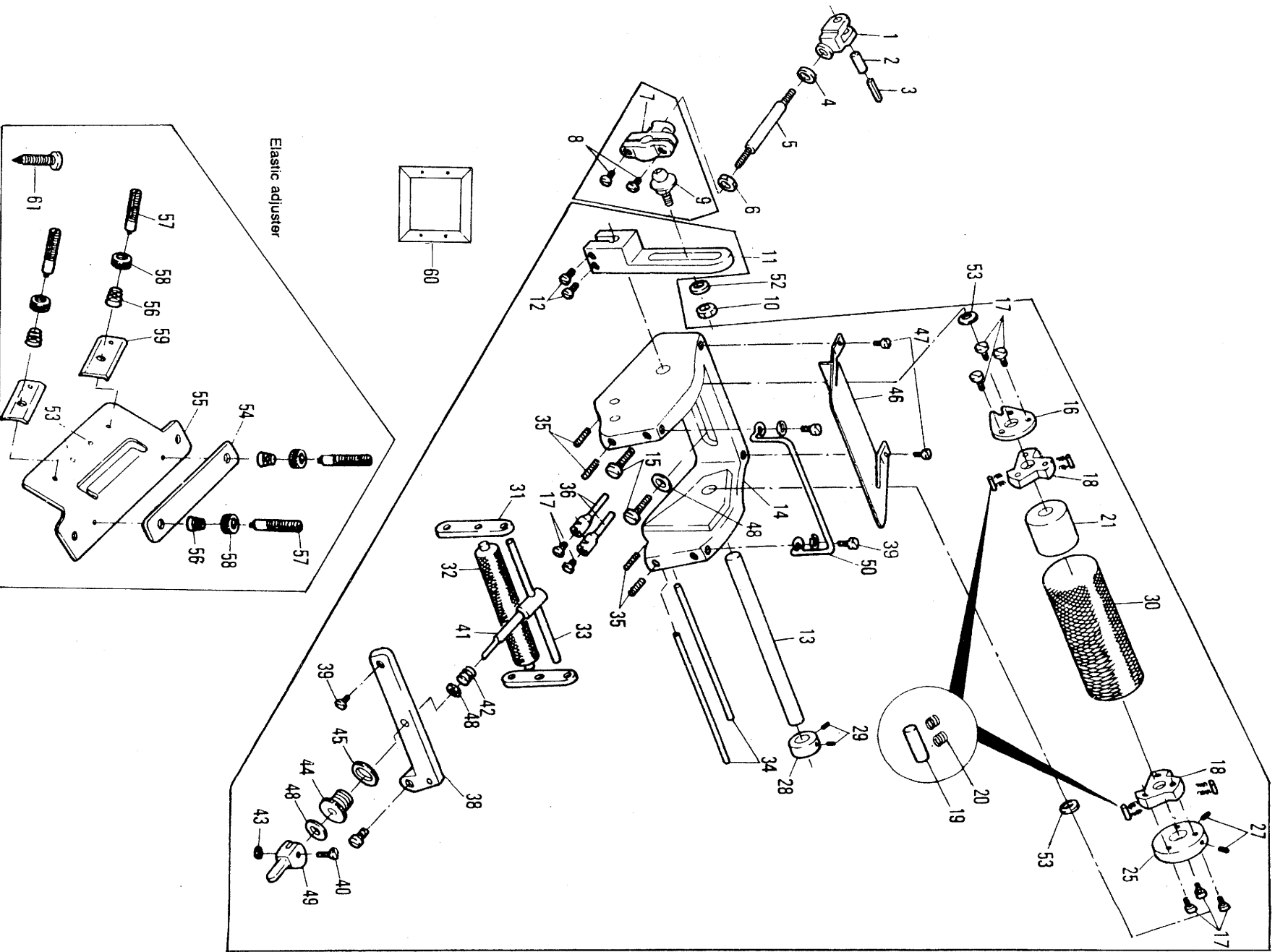
(1/4"; 3/16")

78710P-PL



Ref. No.	Part No.	Part Name	Q'ty	Ref. No.	Part No.	Part Name	Q'ty
1	B81111	Needle Bar	51	51			
2			52	52			
3	B62208	Screw.....	53	53			
4	B61022	Screw.....	54	54			
5			55	55			
6			56	56			
7			57	57	B06LH(3/16"~1/3") Looper Holder(1/4",3/16")		
8			58	58			
9	B81124	Retainer Holder.....	59	59			
10	B60241	Screw.....	60	60			
11			61	61			
12			62	62	B08NH(1/4",3/16") Needle holder(1/4",3/16").....		
13			63	63			
14			64	64	B08PF(1/4",3/16") Presser Foot(1/4",3/16").....		
15			65	65			
16			66	66	B08RH(1/4",3/16") Retainer Holder(1/4",3/16").....		
17			67	67			
18			68	68			
19	B81141	Screw.....	69	69	B08FD(1/4",3/16") Feed Dog(1/4",3/16")		
20	B04NH(1/4"~1-1/2") Needle holder(1/4"~1-1/2").....		70	70	B08NP(1/4",3/16") Needl Plate(1/4",3/16").....		
21			71	71			
22	B04PF(1/4"~1-1/2") Presser Foot(1/4"~1-1/2")		72	72			
23			73	73			
24			74	74			
25	B04RH(1/4"~1-1/2") Retainer Holder(1/4"~1-1/2").....		75	75			
26			76	76			
27			77	77	B08LH(1/4",3/16") Looper Holder(1/4",3/16").....		
28	B04FD(1/4"~1-1/2") Feed Dog(1/4"~1-1/2")		78	78			
29	B04NP(1/4"~1-1/2") Needl Plate(1/4"~1-1/2")		79	79			
30			80	80			
31	B04LH(1/4"~1-1/2") Looper Holder(1/4"~1-1/2").....		81	81	B10NH(1/4",3/16") Needle holder(1/4",3/16").....		
32			82	82			
33			83	83	B10PF(1/4",3/16") Presser Foot(1/4",3/16").....		
34			84	84			
35			85	85	B10RH(1/4",3/16") Retainer Holder(1/4",3/16").....		
36			86	86			
37	B60229	Screw.....	87	87			
38			88	88	B10FD(1/4",3/16") Feed Dog(1/4",3/16")		
39			89	89	B10NP(1/4",3/16") Needl Plate(1/4",3/16").....		
40	B06NH(3/16"~1/3") Needle holder(3/16"~1/3")		90	90			
41			91	91			
42	B06PF(3/16"~1/3") Presser Foot(3/16"~1/3").....		92	92			
43			93	93			
44			94	94			
45	B06RH(3/16"~1/3") Retainer Holder(3/16"~1/3").....		95	95			
46			96	96			
47			97	97	B10LH(1/4",3/16") Looper Holder(1/4",3/16").....		
48	B06FD(3/16"~1/3") Feed Dog(3/16"~1/3")		98	98			
49	B06NP(3/16"~1/3") Needl Plate(3/16"~1/3")		99	99			
50			100	100			

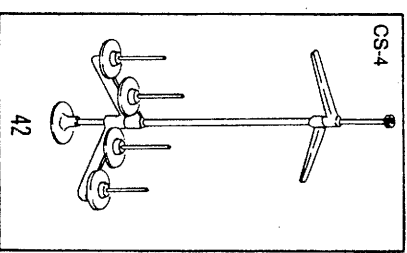
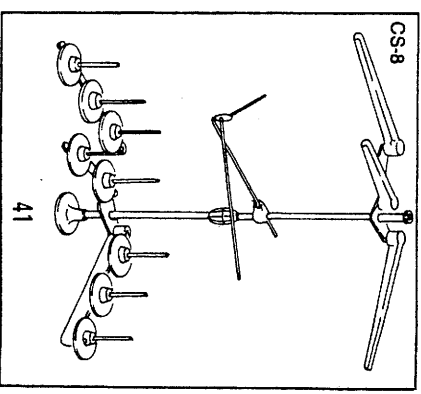
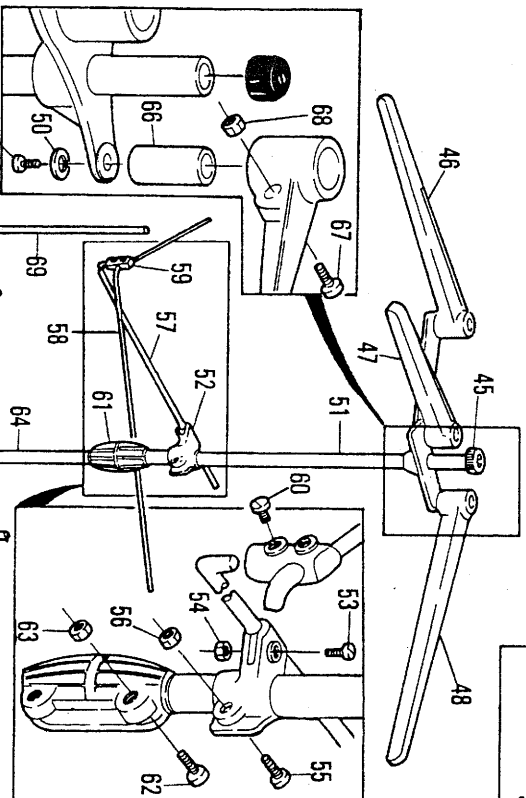
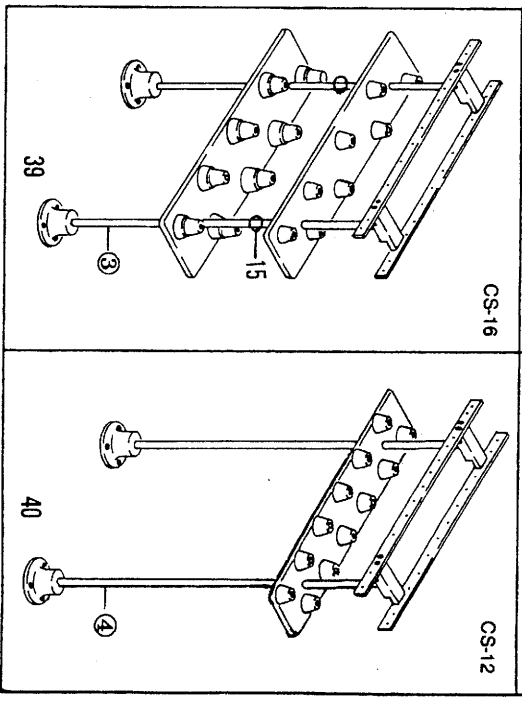
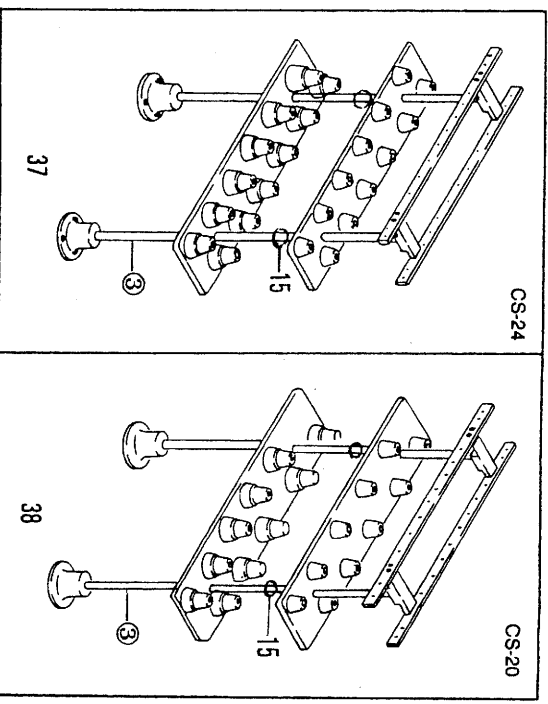
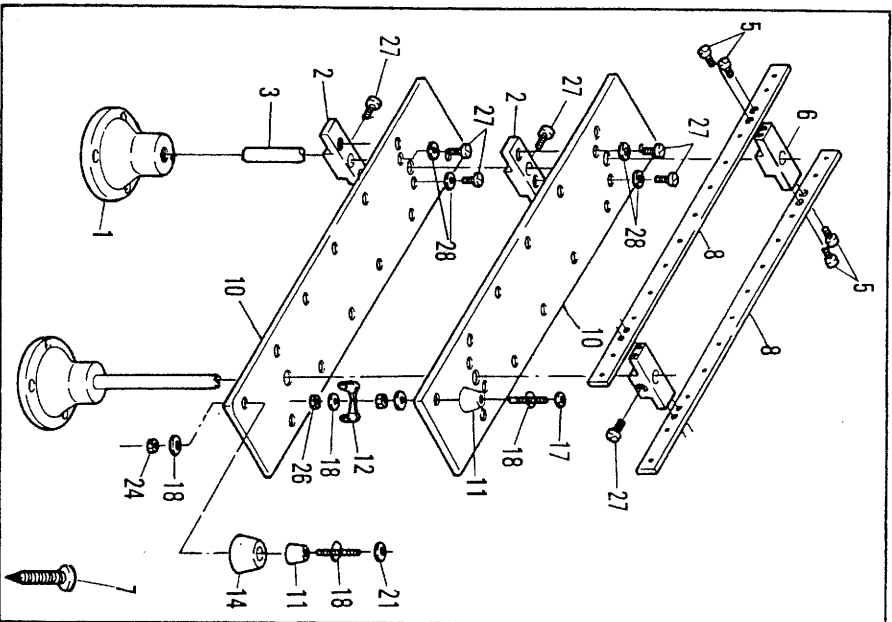
78704 PMD•78706 PMD Subclass models
13. Front pulley mechanism



Ref. No.	Part No.	Part Name	Q'ty
1	B61201	Connecting link	1
2	B60512	Pin	1
3	B60446	Felt	1
4	B60213	Nut	1
5	B61205	Puller connecting bar	1
6	B60628	Nut	1
7	B60701	Connecting ball joint	1
8	B60702	Screw	2
9	B61209	Connecting rod	1
10	B60644	Nut	1
11	B61211	Puller connecting lever	1
12	B61212	Screw	1
13	B61213	Puller rocker shaft	2
14	B61214	Puller rocker	1
15	B61215	Screw	1
16	B61216	Puller clutch driving collar	2
17	B60162	Screw	1
18	B60940	Puller driving clutch	3
19	B60949	Puller driving clutch	2
20	B60950	Puller driving clutch roller	6
21	B61221	Puller driving clutch spring	12
22		Puller thrust collar	1
23			
24			
25	B61225	clutch driving collar	1
26			
27	B61227	Screw	2
* 28	B60830	Shaft collar	1
29	B60659	Screw	2
30	B61230	Puller pipe	1

Ref. No.	Part No.	Part Name	Q'ty
31	B61231	Roller holder	2
32	B61232	Roller	2
33	B61233	Pivot shaft	1
34	B61234	Pivot shaft	1
35	B61235	Screw	2
36	B61236	Pivot shaft holder	4
37			
38	B61238	Rubber tightener	2
39	B60123	Screw	1
40	B61240	Pin	2
41	B61241	Roller controller	1
42	B61242	Spring	1
43	B61243	E-ring	1
44	B61244	Screw	1
45	B61245	Nut	1
46	B61246	Puller cover	1
47	B60132	Screw	2
48	B60111	Washer	1
49	B61249	Lever	1
50	B61250	Guide	1
51			
52	B60645	Washer	1
53	B80363	Pin	2
54	B61254	Strip tension base	1
55	B61255	Strip tension plate	1
56	B61256	Spring	4
57	B61257	Tension post	4
58	B61258	Nut	4
59	B61259	Strip tension plate (small)	4
60	B61260	Connecting holder	1
61	B61261	Screw	2

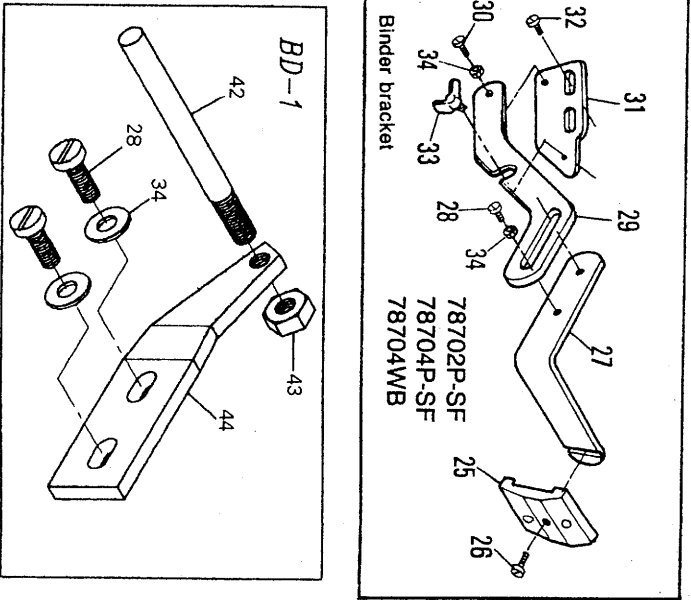
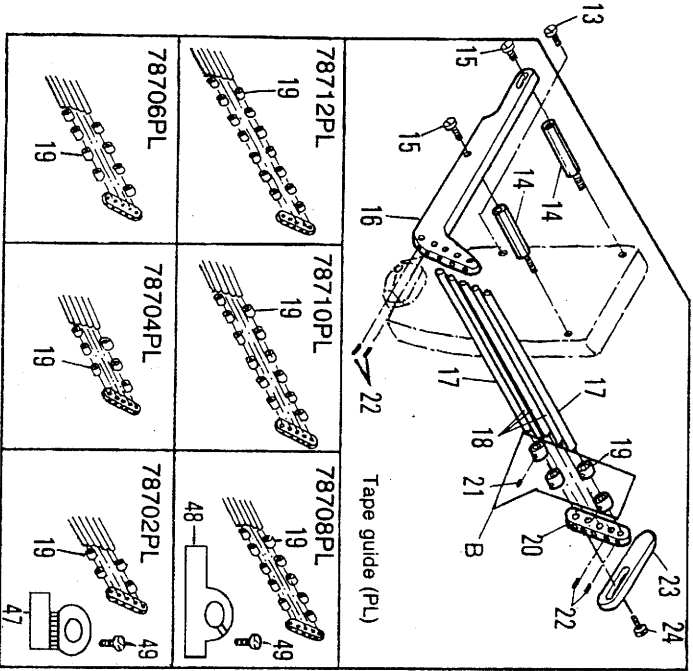
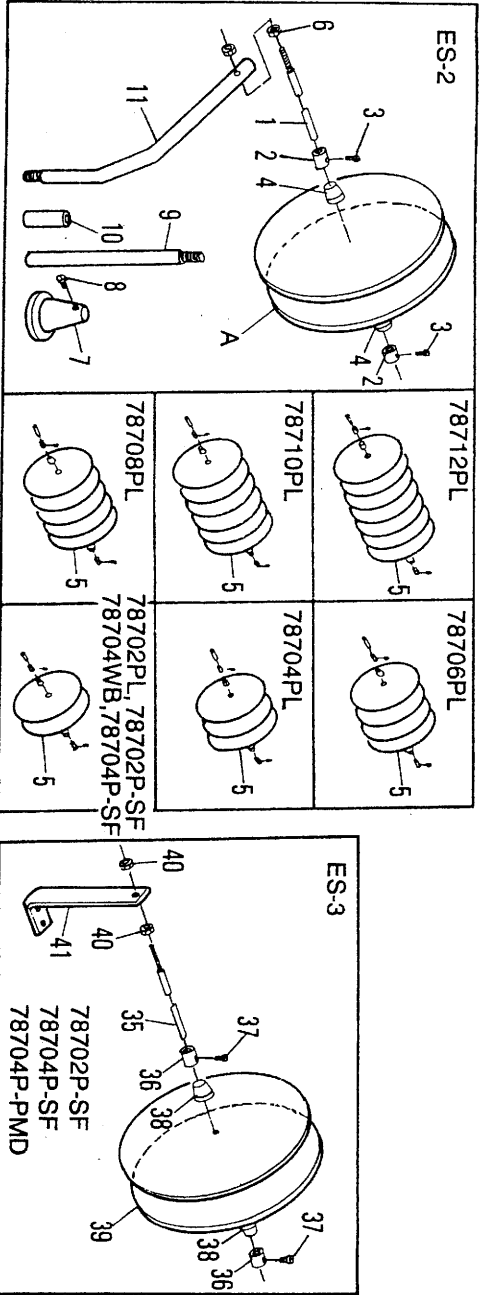
14. Thread stand



Ref. No.	Part No.	Part Name	Qty
1	B81501	Base	1
2	B81502	Base (lower)	1
3	B81503	Bar	1
4	B81504	Base (upper)	1
5	B81505	Screw	1
6	B81506	Thread guide bracket	1
7	B81507	Screw	1
8	B81508	Thread guide	1
9			
10	B81510	Thread base plate	1
11	B81511	Spool retaining pin B	1
12	B81512	Thread eyelet	1
13		Spool retaining pin B	1
14	B81514	Spool retaining pin A	1
15	B62425	Nut	1
16			
17		Screw pin	1
18	B81517	Washer	1
19	K60841	Nut	1
20		Nut	1
21	B81521	Screw pin	1
22		Washer	1
23		Washer	1
24	B81524	Nut	1
25		Washer	1
26		Nut	1
27		Screw	1
28	B60106	Washer	1
29	B60111	Screw	1
30		Screw	1
31		Washer	1
32		Screw	1
33		Screw	1
34			
35			
36		Thread stand CS-24	1
37		Thread stand CS-20	1
38		Thread stand CS-16	1
39		Thread stand CS-12	1
40			

Ref. No.	Part No.	Part Name	Qty
41		Thread stand CS-8	1
42		Thread stand CS-4	1
43			
44			
45		Cap	1
46		Thread guide bracket (3)	1
47		Thread guide bracket (2)	1
48		Thread guide bracket (3)	1
49		Screw	1
50		Washer	1
51		Bar (upper)	1
52		Shank	1
53		Screw	1
54		Nut	1
55		Screw	1
56		Nut	1
57		Thread eyelet guide arm bar	1
58		Thread eyelet guide	1
59		Joint	1
60		Screw	1
61		Joint	1
62		Screw	1
63		Nut	1
64		Bar (low)	1
65		Base	1
66		Mounting bracket	1
67		Screw	1
68		Nut	1
69		Spool pin	1
70		Spool retaining fin	1
71		Spool mat	1
72		Spool tray	1
73		Nut	1
74		Washer	1
75		Spool pin bracket (3)	1
76		Spool pin bracket (2)	1
77		Spool pin bracket (3)	1
78		Screw	1
79		Base	1

15. Tape stands, Tape guide



Ref. No.	Part No.	Part Name	Qty
1	78706PL	Tape reel post	1
2	78712PL	Stop collar	2
3	78710PL	Hex. bolt	2
4	78704PL	Collar	2
5	78708PL	Tape reel disc	2
6	78702PL	Nut	2
7	78704WB	Base	1
8	78704P-SF	Hex. bolt	2
9	78704P-PMD	Post	1
10	78704P-SF	Connecting pipe	1
11	78704P-PMD	Post	1
12	78704P-SF	Screw	3
13	78704P-PMD	Mount bracket	2
14	78704P-SF	Screw	2
15	78704P-PMD	Guide bracket	1
16	78704P-SF	Guide shaft, large	5
17	78704P-PMD	Guide shaft, small	3
18	78704P-SF	Collar, large	10
19	78704P-PMD	Guide fixing bracket	1
20	78704P-SF	Screw	17
21	78704P-PMD	Screw	1
22	78704P-SF	Guide clamp	1
23	78704P-PMD	Screw	1
24	78704P-SF	Screw	1

Ref. No.	Part No.	Part Name	Qty
25	BD-1	Fixing clamp	1
26	BD-1	Screw	1
27	BD-1	Mounting base for holder	1
28	BD-1	Screw	1
29	BD-1	Mounting slide for holder	4
30	BD-1	Screw	1
31	BD-1	Mounting base for holder	1
32	BD-1	Screw	3
33	BD-1	Washer	4
34	BD-1	Post	1
35	BD-1	Stop collar	2
36	BD-1	Hex. bolt	2
37	BD-1	Collar	2
38	BD-1	Tape reel disc	2
39	BD-1	Nut	2
40	BD-1	Tape reel plate	1
41	BD-1	Shaft	1
42	BD-1	Nut	1
43	BD-1	Support plate	1
44	BD-1	Binder base (L)	1
45	BD-1	Binder base (S)	1
46	BD-1	Screw	2

16. Accessories

B62422

B62444A

B62435A

14

16

17

18

19

20

21

22

23

24

25

26

27

28

29

30

31

32

33

34

35

36

37

38

39

40

41

42

43

44

45

46

47

48

49

50

51

52

53

54

55

56

57

58

59

60

61

62

63

64

65

66

67

68

69

70

71

72

73

74

75

76

77

78

79

80

81

82

83

84

85

86

87

88

89

90

91

92

93

94

95

96

97

98

99

100

101

102

103

104

105

106

107

108

109

110

111

112

113

114

115

116

117

118

119

120

121

122

123

124

125

126

127

128

129

130

131

132

133

134

135

136

137

138

139

140

141

142

143

144

145

146

147

148

149

150

151

152

153

154

155

156

157

158

159

160

161

162

163

164

165

166

167

168

169

170

171

172

173

174

175

176

177

178

179

180

181

182

183

184

185

186

187

188

189

190

191

192

193

194

195

196

197

198

199

200

201

202

203

204

205

206

207

208

209

210

211

212

213

214

215

216

217

218

219

220

221

222

223

224

225

226

227

228

229

230

231

232

233

234

235

236

237

238

239

240

241

242

243

244

245

246

247

248

249

250

251

252

253

254

255

256

257

258

259

260

261

262

263

264

265

266

267

268

269

270

271

272

273

274

275

276

277

278

279

280

281

282

283

284

285

286

287

17. Table stand installation diagram

